

SECTION 4

FANS & ACCESSORIES

Ceiling Exhaust.....	32
Speed Controllers / Broan Grilles	33
Conversion Kits/ Transitions.....	33
Isolators	33
Wall Caps.....	33
Roof Caps.....	34
Roof Exhaust.....	35
Roof Curbs	38

BROAN LO-SONE CEILING FANS



115 Volt.

Stock #	Outlet	CFM vs. SP				Sones @ .25"	List Price
		0"	.25"	.375"	.5"		
L100	6"	136	93	80	65	1.3	\$220.00
L150	6"	181	141	132	124	2.2	\$250.00
L200	8"	231	196	186	177	2.3	\$290.00
L250	8"	269	253	248	239	3.0	\$340.00
L300	8"	309	294	286	276	2.9	\$300.00
L400	4.5 X 18.5	480	388	344	299	2.8	\$490.00
L500	4.5 X 18.5	538	491	463	434	3.6	\$520.00

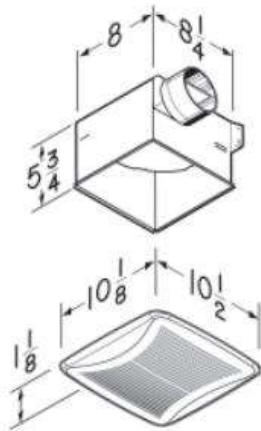
BROAN ECONOMY CEILING FANS

115 Volt.

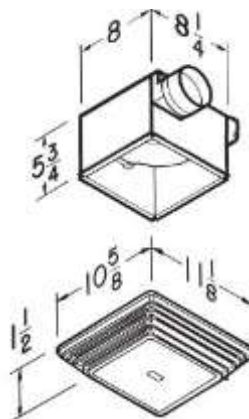
Stock #	Outlet	CFM @ 0"	Sones	Amps	List Price
674	4"	110	4	1.3	\$120.00
684	4"	80	2.5	0.5	\$120.00
688	3"	50	2	0.8	\$40.00



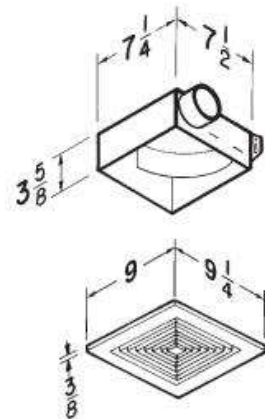
674



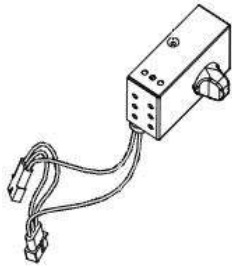
684



688

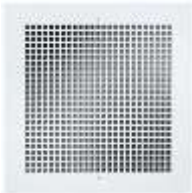


FAN SPEED CONTROLLERS - BROAN



Stock #	Description	Max. Amp	List Price
57	L100-L700	3	\$48.00
80L	L100-L900 Internal	3	\$106.00

BROAN EXHAUST GRILLES



White Enamel Painted Steel.

Stock #	Description	List Price
MG1	for L100-L300	\$50.00

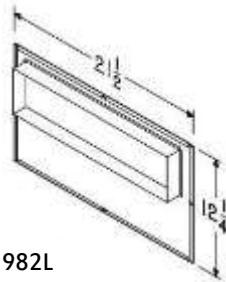
ISOLATORS



For use with threaded rods up to 3/8" for suspension of item.
Nut, washer and rod by others.

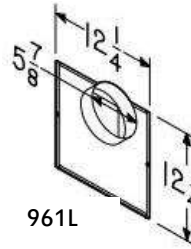
Stock	Descriptions	List Price
AVHM-50	Max Load 110 lbs.	\$5.00
AVHM-100	Max Load 220 lbs.	\$5.00

BROAN IN-LINE CONVERSION KITS

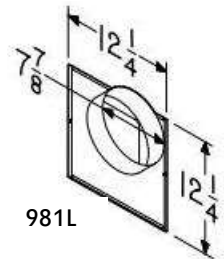


982L

Stock #	Description	List Price
961L	6" for L100/L150	\$44.00
981L	8" for L100/L250/L300	\$44.00
982L	4.5" X 18.5" for L400/L500	\$44.00



961L



981L

WALL CAP Wall cap with screen. Galvanized



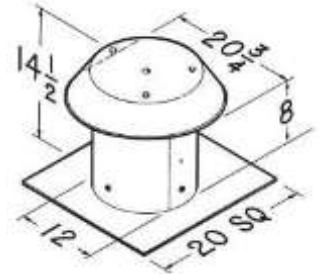
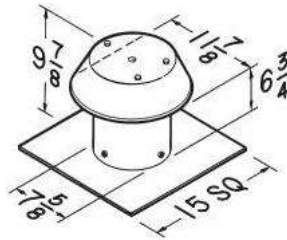
Stock #	Description	List Price
SWVG4	4"	\$22.00
SWVG6	6"	\$25.00
SWVG8	8"	\$30.00
SWVG10	10"	\$50.00

FLAT BASE ROOF CAP



611/612

Stock #	Description	List Price
611	Aluminum 8"	\$ 96.00
612	Aluminum 12"	\$170.00
PJV826	Galvanized 8" White	\$ 40.00
PJV1226	Galvanized 12" White	\$ 60.00

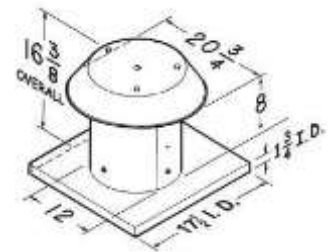
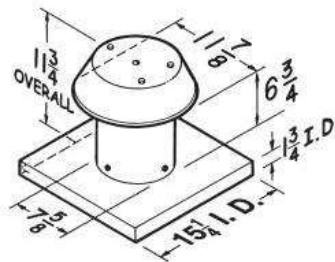


CURB MOUNT ROOF CAP



611CM/612CM

Stock #	Description	List Price
611CM	AL 8" (curb size = 14" X 14")	\$110.00
612CM	AL 12" (curb size = 17" X 17")	\$170.00
PJV826-CURB	GA 8" (curb size = 14" X 14") white	\$ 70.00
PJV1226-CURB	GA 12" (curb size = 17" X 17") white	\$ 80.00



TEE TOPS

Galvanized with 12 inch high throat. For range hoods, dryer vents, fans.



Stock #	Description	List Price
JV42812CL	4"	\$30.00
JV62812CL	6"	\$36.00
JV82812CL	8"	\$40.00

AC Catalog Downblast



ACE

Static Pressure: 0 - 1.5"

Direct Drive (ACED)

- Wheel Sizes: 7 - 18"
- Capacity: 80 - 4,200 CFM

Direct Drive EC (ACED-EC)

- Wheel Sizes: 7 - 15"
- Capacity: 70 - 2,600 CFM

Belt Drive (ACEB)

- Wheel Sizes: 10 - 54"
- Capacity: 50 - 32,000 CFM

Wall



ACW

Standard Wheel:

Static Pressure: 0 - 1.5"

Direct Drive (ACWD)

- Wheel Sizes: 7 - 18"
- Capacity: 60 - 4,300 CFM

Direct Drive EC (ACWD-EC)

- Wheel Sizes: 7 - 15"
- Capacity: 80 - 2,500 CFM

Belt Drive (ACWB)

- Wheel Sizes: 10 - 24.5"
- Capacity: 280 - 8,200 CFM

Upblast



ACRU

Standard Wheel:

Static Pressure: 0 - 1.5"

Direct Drive (ACRUD)

- Wheel Sizes: 7 - 18"
- Capacity: 60 - 4,300 CFM

Direct Drive EC (ACRUD-EC)

- Wheel Sizes: 7 - 15"
- Capacity: 80 - 2,500 CFM

Belt Drive (ACRU)

- Wheel Sizes: 10 - 49"
- Capacity: 280 - 28,000 CFM
- Static Pressure: 0 - 1.5"

Smoke Control Upblast



ACSC (ACSC, ACSC-HP & ACSC-XP)

These have the same availability & performance as the ACRU, ACRU-HP & ACRU-XP.

Special features for products on this page

All sizes are available on Express, Cook's 24-hour shipping program.

High Wind (Miami-Dade) Tested

Products	Sizes
ACEB	60-300
ACED	70-180
ACRUB series	100-300
ACRUD series	70-195
ACSC series	100-300
VCRD series	100-195
VCR series	100-300

Seismic (OSHPD) Tested

Products	Sizes
ACRU series	Up to 490
ACW series	
ACSC series	
VCR series	

UL "Power Ventilator for Smoke Control Systems" ACSC series

UL 762 Grease Laden Air Restaurant Exhaust * VCR series & VCRD series

* See page 17 for details



High Pressure Wheel:

Direct Drive (ACWD-HP)

- Wheel Size: 15 - 19.5"
- Capacity: 570 - 3,700 CFM
- Static Pressure: 0.125 - 1.75"

Direct Drive EC (ACWDEC-HP)

- Wheel Sizes: 15"
- Capacity: 360 - 1,600 CFM
- Static Pressure: 0 - 1.5"

Belt Drive (ACWB-HP)

- Wheel Sizes: 15 - 36.5"
- Capacity: 340 - 19,000 CFM
- Static Pressure: 0.25 - 2.5"

Extended Pressure Wheel:

Direct Drive (ACWD-XP)

- Wheel Sizes: 16.5 - 19.5"
- Capacity: 520 - 2,200 CFM
- Static Pressure: 0.125 - 1.75"

Direct Drive EC (ACWDEC-XP)

- Wheel Sizes: 16.5 - 18"
- Capacity: 350 - 1,900 CFM
- Static Pressure: 0 - 1.5"

Belt Drive (ACWB-XP)

- Wheel Sizes: 16.5 - 24.5"
- Capacity: 520 - 4,500 CFM
- Static Pressure: 1 - 4.5"

High Pressure Wheel:

Direct Drive (ACRUD-HP)

- Wheel Sizes: 15 - 19.5"
- Capacity: 580 - 3,700 CFM
- Static Pressure: 0.25 - 1.75"

Direct Drive EC (ACRUDEC-HP)

- Wheel Sizes: 15"
- Capacity: 360 - 1,600 CFM
- Static Pressure: 0 - 1.5"

Belt Drive (ACRU-HP)

- Wheel Size: 15 - 36.5"
- Capacity: 340 - 19,000 CFM
- Static Pressure: 0.25 - 2.5"

Extended Pressure Wheel:

Direct Drive (ACRUD-XP)

- Wheel Sizes: 16.5 - 19.5"
- Capacity: 520 - 2,200 CFM
- Static Pressure: 0.125 - 1.75"

Direct Drive EC (ACRUDEC-XP)

- Wheel Sizes: 16.5 - 18"
- Capacity: 350 - 1,900 CFM
- Static Pressure: 0 - 1.5"

Belt Drive (ACRU-XP)

- Wheel Size: 16.5 - 36.5"
- Capacity: 520 - 11,000 CFM
- Static Pressure: 1 - 4.5"

VCR Catalog Restaurant Upblast



VCR

Standard Wheel:

Static Pressure: 0 - 1.5"

Direct Drive (VCRD)

- Wheel Sizes: 10.1 - 18"
- Capacity: 400 - 4,300 CFM

Direct Drive (VCRD-EC)

- Wheel Sizes: 10.1 - 15"
- Capacity: 260 - 2,500 CFM

Belt Drive (VCR)

- Wheel Sizes: 10 - 49"
- Capacity: 280 - 28,000 CFM

High Pressure Wheel:

Direct Drive (VCRD-HP)

- Wheel Sizes: 15 - 19.5"
- Capacity: 580 - 3,700 CFM
- Static Pressure: 0.125 - 1.75"

Direct Drive (VCRDEC-HP)

- Wheel Sizes: 15"
- Capacity: 360 - 1,600 CFM
- Static Pressure: 0 - 1.5"

Belt Drive (VCR-HP)

- Wheel Sizes: 15 - 36.5"
- Capacity: 340 - 19,000 CFM
- Static Pressure: 0.25 - 2.5"

Extended Pressure Wheel:

Direct Drive (VCRD-XP)

- Wheel Sizes: 16.5 - 19.5"
- Capacity: 520 - 2,200 CFM
- Static Pressure: 0.12 - 1.75"

Direct Drive (VCRDEC-XP)

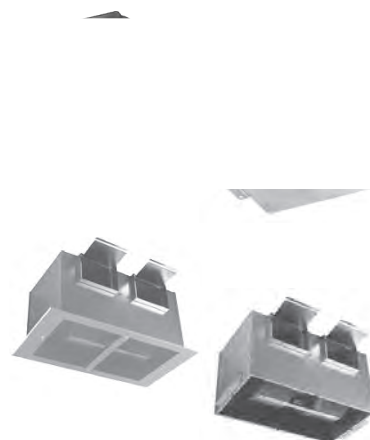
- Wheel Sizes: 16.5 - 18"
- Capacity: 350 - 1,900 CFM
- Static Pressure: 0 - 1.5"

Belt Drive (VCR-XP)

- Wheel Sizes: 16.5 - 36.5"
- Capacity: 520 - 11,000 CFM
- Static Pressure: 1 - 4.5"

Gemini Catalog

"Gemini" Room Exhausts



GC & GN Size: 126 - 188

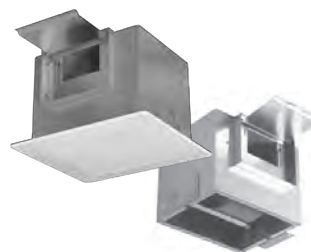
Static Pressure: 0 - 1"

Ceiling (GC)

• Capacity: 30 - 260 CFM

Inline (GN)

• Capacity: 40 - 260 CFM



GC & GN Size: 222 - 740

Static Pressure: 0 - 1"

Ceiling or Wall (GC)

• Capacity: 80 - 830 CFM

Inline (GN)

• Capacity: 80 - 870 CFM

GC & GN Size: 822 - 960

Static Pressure: 0 - 1"

Ceiling or Wall (GC)

• Capacity: 640 - 1,800 CFM

Inline (GN)

• Capacity: 760 - 1,800 CFM



GC & GN Size: 1000 - 2000

Ceiling or Wall (GC)

Inline (GN)

• Static Pressure: 0.1 - 1"

• Capacity: 1,100 - 3,400 CFM

DB Catalog

Duct Blowers



DB & DBX

Belt Drive (DB)

External Belt Drive (DBX)

• Wheel Sizes: 8 - 18"

• Capacity: 300 - 9,400 CFM

• Static Pressure: 0.125 - 2"



TDB (Double Wide)

Wheel Sizes: 8 - 18"

Capacity: 800 - 15,500 CFM

Static Pressure: 0.125 - 2"

SDB

Wheel Sizes: 10 - 24.5"

Capacity: 300 - 14,400 CFM

Static Pressure: 0.250 - 3"

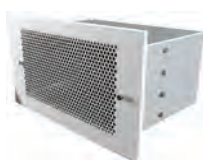
Special features for products on this page

All GC, GN, DB & DBX sizes are available on Express, Cook's 24-hour shipping program.

EnergyStar: GC 126 - 242

CBF Catalog

Cinder Block Sized Fan



CBF

Capacity: 70 - 530 CFM

Static Pressure: 0 - 0.4"

Air Curtain Catalog

Air Curtain

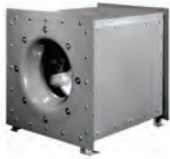


Air Curtain

Max. Capacity: 3,200 CFM

NORMAN S. WRIGHT CO CENTRIGUGAL & CENTRI-VANE INLINE BLOWERS

SQI Catalog Square Centrifugal



SQI-D (Direct Drive)

Standard Wheel

- Wheel Sizes: 7 - 16.5"
- Capacity: 50 - 4,900 CFM
- Static Pressure: 0 - 2"



SQI-B (Belt Drive)

Standard Wheel (SQI-B)

- Wheel Sizes: 9 - 40.2"
- Capacity: 400 - 33,000 CFM
- Static Pressure: 0.125 - 3"

High Pressure Wheel (SQI-HP)

- Wheel Sizes: 13.5 - 36.5"
- Capacity: 220 - 31,000 CFM
- Static Pressure: 0.25 - 5"

SQN Catalog Multi-Directional Square Centrifugal



SQN-D (Direct Drive)

Standard Wheel (SQN-D)

- Wheel Sizes: 7 - 16.5"
- Capacity: 30 - 4,300 CFM
- Static Pressure: 0 - 2"

Standard Wheel with EC motor (SQND-EC)

- Wheel Sizes: 7 - 15"
- Capacity: 70 - 2,500 CFM
- Static Pressure: 0 - 1.25"



SQN-B (Belt Drive)

Standard Wheel (SQN-B)

- Wheel Sizes: 10 - 40.2"
- Capacity: 35 - 26,000 CFM
- Static Pressure: 0.125 - 3"

High Pressure Wheel (SQN-HP)

- Wheel Sizes: 13.5 - 40.2"
- Capacity: 1,000 - 22,000 CFM
- Static Pressure: 0.25 - 5"

TCN Catalog Tubular Centrifugal Inline



TCN-D (Direct Drive)

Wheel Sizes: 6 - 16.5"
Static Pressure: 0 - 3"

Standard Wheel (TCN-D)

- Capacity: 90 - 5,000 CFM

High Pressure Wheel (TCNH-D)

- Capacity: 90 - 4,500 CFM



TCN-B (Belt Drive)

Wheel Sizes: 6 - 49"

Standard Wheel (TCN-B)

- Capacity: 50 - 41,000 CFM
- Static Pressure: 0 - 2.5"

High Pressure Wheel (TCNH-B)

- Capacity: 30 - 46,000 CFM
- Static Pressure: 1 - 4"

CV Catalog Centri-Vane Inline



CVD (Direct Drive)

Direct Drive

- Wheel Sizes: 8 - 20"
- Capacity: 80 - 5,600 CFM
- Static Pressure: 0.125 - 0.875"



CVB & CV-S (Belt Drive)

Wheel Sizes: 12 - 36"

Belt Drive (CVB)

- Capacity: 600 - 23,000 CFM
- Static Pressure: 0.250 - 4"

Belt Drive Stretched Unit with Straightening Vanes (CV-S)

- Capacity: 600 - 31,200 CFM
- Static Pressure: 0.500 - 6"

CIC Catalog Centrifugal Inline



CIC (Belt Drive)

- Wheel Sizes: 12 - 73"
- Capacity: 900 - 192,000 CFM
- Static Pressure: 1 - 12"

Special features for products on this page

All SQN, SQI sizes are available on Express, Cook's 24-hour shipping program (CV up to size 300). SQND-EC is not available on Express.

Products	Sizes
SQN-D series	60 - 402

UL 762 Grease Laden Air
Restaurant Exhaust *

CIC

* See page 17 for details

ROOF CURB

12" high, no cant. for flat roof, treated 1-1/2" wood nailer, insulated.

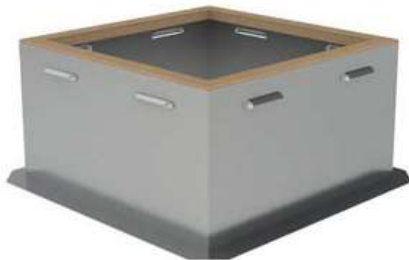


Stock #	Size	List Price
CURB 14	14" X 14" for 8" Cap	\$70.00
CURB 15.5	15.5" X 15.5"	\$80.00
CURB 17	17" X 17" for 12" Cap	\$88.00
CURB 18.5	18.5" X 18.5"	\$100.00
CURB 22.5	22.5" X 22.5"	\$110.00
CURB 24.5	24.5" X 24.5"	\$120.00

Note

- 1) Curbs are sized 1-1/2" less than fan base to allow 3/4" each side for clearance and flashing material.
- 2) Inside of curb is 3" less O.D.

VENTED ROOF CURB FOR KITCHEN FAN



18" high Galvanized construction, no insulation

Stock #	Size	List Price
VCURB 23.5	23.5" X 23.5"	\$164.00
VCURB 29.5	29.5" X 29.5"	\$182.00
VCURB 33.5	33.5" X 33.5"	\$210.00